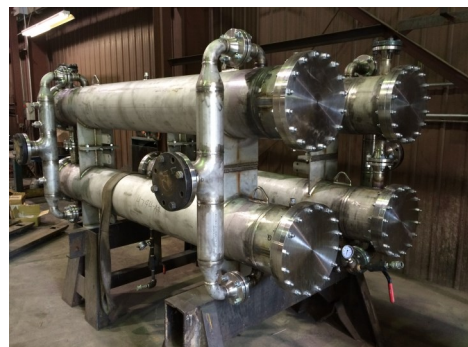


**HETRICK
MFG., INC.**

HMI

HETRICK MFG., INC.

- Thermal Rating / Design
- Mechanical Engineering ASME Code
- Fabrication, Machining
- Custom Shell & Tube Heat Exchangers
- Pressure Vessels
- Interconnect Piping



Custom Shell & Tube Heat Exchangers

- **ASME Code Section VIII Div. I Heat Exchangers, Pressure Vessels, Reactor Columns and Separator Vessels**
- **Over 60 Weld Procedures Including: Carbon, Stainless, Monel, Inconel, Duplex, Hastelloy, Cr-Mo, Cu-Ni, Lo-Temp and many others**
- **TEMA B, C and R Units - API 660 - Custom Specifications**



- Designed to Specification
- Up to 50" Diameter Shell & Tube Exchangers/ 100,000 lbs.
- Up to 15' Diameter Vessels
- Offering Replacement, Repair and Re-tubing of Existing Units
- Third Generation Family Owned Business
- Responsive, Top Lead Times

HETRICK MFG., INC.

210 Reimer Street

Lower Burrell, PA 15068

130 Entrance Drive

New Kensington, PA 15068

Phone: 724-335-0455

Fax: 724-335-1414

www.hetrickmfg.com

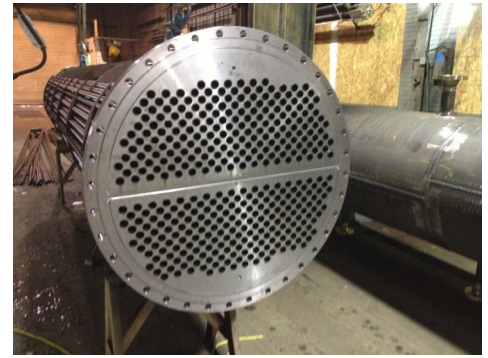
sales@hetrickmfg.com





HETRICK MFG., INC.

- Design
- Engineering
- Manufacturing
- Custom Shell & Tube Heat Exchangers
- Pressure Vessels
- Interconnect Piping



General Capabilities

- We thermally rate, mechanically design & fabricate custom shell & tube heat exchangers and ASME code pressure vessels.
- Materials: 40% Carbon, 40% Stainless (316/304), 20% High Nickel Alloy Hastelloy, Monel, 904L, Inconel, Clad Materials, Duplex, Cr-Mo, LT
- Established in 1974 in Lower Burrell, PA
- Two Manufacturing facilities:
 - 8,000 SF Machine Shop and Metal Fabrication (210 Reimer Street)
 - 24,000 SF Fabrication Shop (130 Entrance Drive)
- 15 feet under hook
- 100,000 LB Crane Capacity w/ Riggers
- ASME U and R Stamps; NB, CRN & PED Experience
- Customer Base includes Chemical, Plastics, Oil & Gas, Midstream & NGL Paper, Specialty Gas, Modular Process, Refineries, EPCs.
- 35 Employees – Non union
- Typical LT for pipe diameter to 60" dia Heat Exchangers:
 - Drawings: 3-4 weeks typical
 - Hydro Test: 8-18 weeks ADA, Depending on Material Availability
 - Expedited Delivery Service of 2-3 Weeks ARO Available
- Competitive, Responsive
- Specifications Welcome: Engineering, Procedures and QC to Spec.
- Excellent Local NDE, Paint and PWHT vendors
- Absorbed assets & personnel of I.P.E. (Industrial Process Equipment Co. Heat Exchangers) in 2006
- We welcome plant visits, audits & 3rd Party Inspectors

